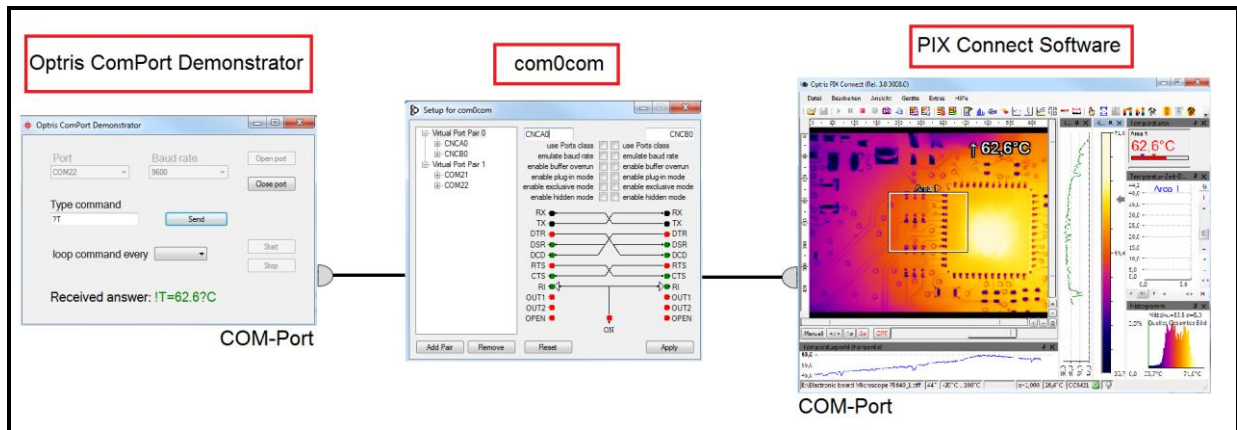


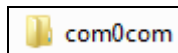
COM-Port Demonstrator

Steps to run the Optris ComPort Demonstrator

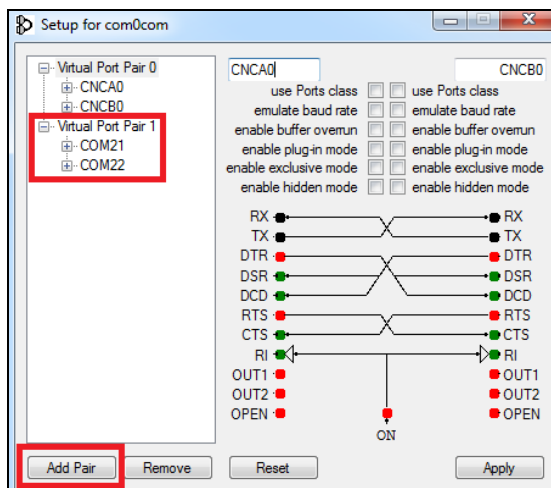
The optris ComPort Demonstrator is a tool to demonstrate a virtual communication between two COM-Ports by using the serial interface of PIX Connect. It is a bidirectional communication with a control loop structure in software (e.g. PLC).



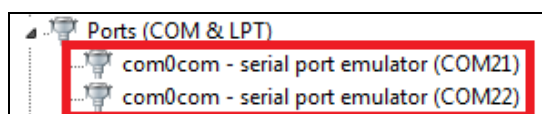
- Requirement: PIX Connect Software, IR imager, com0com program (cross cable emulator)
- Before you can use this tool you have to do the following things:
 - Install the com0com program (you find the program on the provided data medium under *serial communication*).



- Open the Setup of com0com and create a pair of Ports by clicking on **Add Pair**.

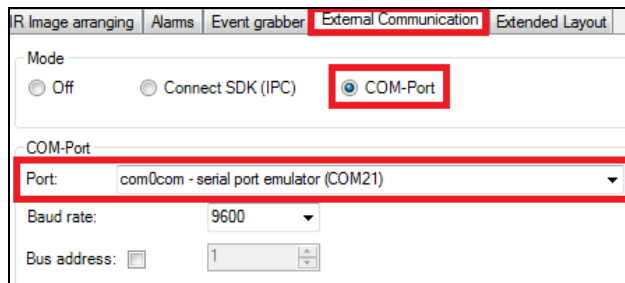


- After the successful setup, you will see in the **Device Manager** under **Ports (COM & LPT)** two com0com ports:

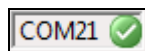


COM-Port Demonstrator

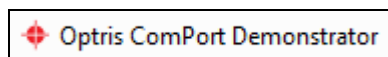
- Connect the imager via USB to the PC
- Start the PIX Connect Software, go to menu *Tools, Configuration* and **External Communication**. Select **COM-Port** and choose under **Port** one serial port pair (e.g. COM21). The *Baud rate* can be kept as it is. No *Bus address* must be selected.



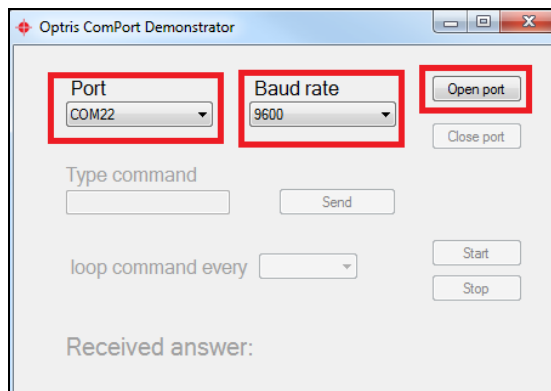
- Click on **Apply** and **OK**. In the status bar you will see the chosen port pair:



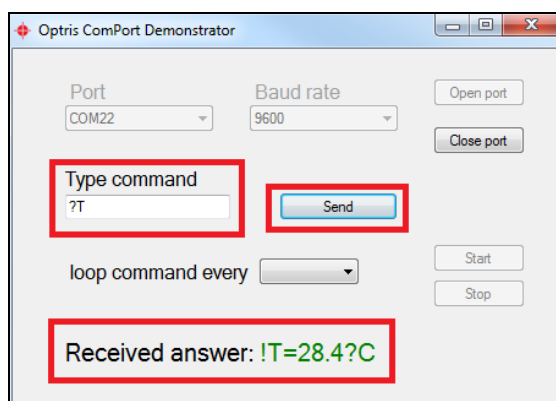
- Open the program Optris *ComPort Demonstrator* (the program is on the data medium under *serial communication*).



- Select the other **Port** pair which you created in com0com (e.g. COM22), the same **Baud rate** (e.g. 9600) as in the software selected and **Open port**.

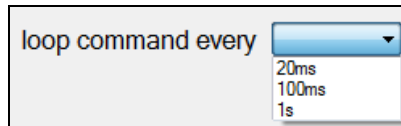


- **Type** in a **command** (e.g. ?T = for reading out the temperature value) and click on **Send**. You will get as an answer the temperature value of the imager.



COM-Port Demonstrator

- Further you can also set up a loop. For this select a loop interval (under **loop command every**) and press **Start** afterwards. You then get each selected loop time a temperature value. To stop the loop click on **Stop**.



COM-Port

- Classical serial interface
- No programming skills needed
- All set and read commands available
- Direct PLC connect ability